

Undergraduate Summer Research Opportunity

Supercomputing Undergraduate Program in Maine

SuperMe

June 1 – August 7, 2009 (Ten weeks)

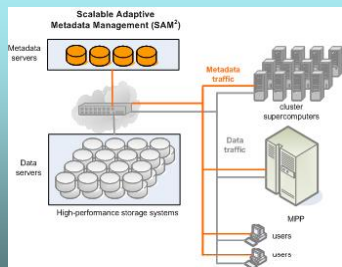
Develop supercomputing techniques and tools, and solve large-scale science and engineering problems

- Exciting research experiences
- \$4,000 stipend
- Housing and dining (\$1,600)
- Travel support
- Entertaining field trips

Online Application:

- <http://arch.eece.maine.edu/superme>
- Deadline: **March 16, 2009**
- Only US citizen & permanent resident eligible
- Ethnic minority, women, disabled persons, and students in rural areas are encouraged to apply.

Sample Computer Systems Projects



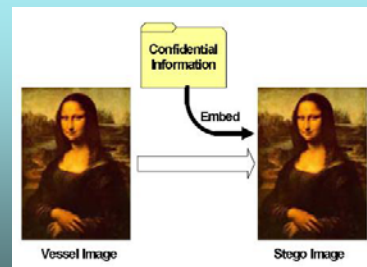
Parallel I/O



Display Wall

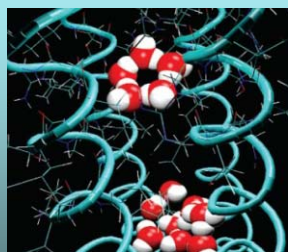


Grid Computing

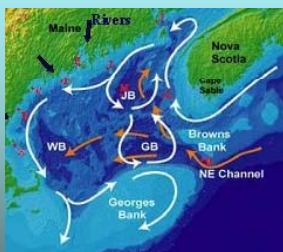


Information Security

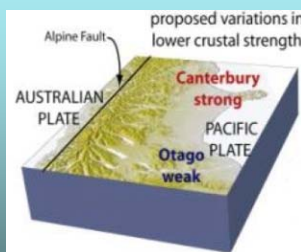
Sample Supercomputing Application Projects



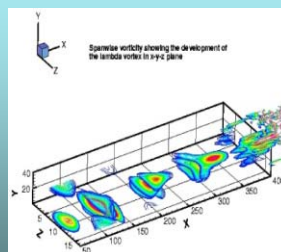
Water modeling



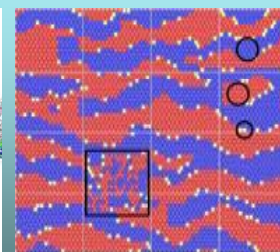
Ocean modeling



Geodynamic modeling



Atmospheric modeling



Material modeling

This project is sponsored by Univ. of Maine, NSF and DoD.

